

The Egyptian Gazette

No. 7,368

ALEXANDRIA, THURSDAY, AUGUST 10, 1905.

SIX PAGES P.T. 1

This Company's system of submarine telegraph cables is the most direct and quickest means of communication from Egypt to Europe, North and South America, East, South and West Africa, India, Australia, New Zealand, China and Japan.

To secure quick transmission, telegrams should be marked Via Eastern. For latest average time to London, see daily bulletin in this paper.

This Company's system of submarine telegraph cables is the most direct and quickest means of communication from Egypt to Europe, North and South America, East, South and West Africa, India, Australia, New Zealand, China and Japan.

To secure quick transmission, telegrams should be marked Via Eastern. For latest average time to London, see daily bulletin in this paper.

Peninsular and Oriental S. N. Company.

Summer Rates will be charged from 2 May to 31 October. For the convenience of families and others, large portions of each ship's accommodation have been reserved for Egypt, so that Berths can be definitely engaged at once, as if the voyage were commencing at Port Said. Plans can be seen at the Offices of the Company's Agents.

Orient-Pacific Line of Royal Mail Steamers.

REDUCED SUMMER FARES FROM MAY TO OCTOBER INCLUSIVE. Reduced fares to Australia. Reduced fares to India. Reduced fares to Ceylon.

BIBBY LINE MAIL STEAMERS.

Special Reduced Rates During Summer Season. Outwards to Colombo, Tientsin, etc., and Harbours. Departures from Suez.

KH DIVIAL MAIL LINE.

PART BRITISH PASSENGER STEAMERS. GRECE-TURKEY LINE. Express steamers leave Alexandria every Wednesday at 4 p.m. for Piræus, Smyrna, Mytilene, and Constantinople.

The Moss S. S. Company, Ltd.

For Liverpool sailing as MALTA (Steamer, JAMES MOSS & Co., 21, James St., Liverpool, England). For London sailing as LONDON (Steamer, JAMES MOSS & Co., 21, James St., Liverpool, England).

MARINE INSURANCE COMPANY, LIMITED.

Established 1836. Capital £1,000,000. Reserve Fund £250,000. THE IMPERIAL FIRE OFFICE united with THE ALLIANCE ASSURANCE CO., Ltd., 1, Old Broad Street, LONDON.

Telephone Company of Egypt, Limited

Capital £1,000,000. Reserve Fund £250,000. For details of rates and conditions, apply to the Company's Office, 1, Rue de la Poste, Alexandria.

P. HENDERSON & CO'S LINE.

Steamers leave Suez and Port Said fortnightly for London or Liverpool direct. S.S. ARABIAN 6000 Tons will leave PORT SAID about August 20 for Liverpool.

Thos. Cook & Son,

General Railway and Steamship Agents, Bankers, Baggage and Forwarding Agents. Officially appointed & Sole Agents in Cairo to the P. & O. S. N. Co.

RESIDENTS IN EGYPT proceeding to Europe for the summer are requested to apply to our offices for information respecting the Passengers, whose steamers plans may be consulted and Berths secured by all Lines of Steamers to all parts of the Globe; arrangements can also be made for the collection and forwarding of their baggage and clearance at port of arrival.

CIRCULAR NOTES issued payable at the current rate of exchange in all the principal cities of Europe. Cook's Interpreters in uniform are present at the principal Railway stations and Landing places in Europe to assist passengers holding their travelling tickets.

Large and splendidly appointed steamers belonging to the Co. leave Cairo three times weekly between November and March, for Luxor, Assuan and Wady-Halfa in connection with India. Special Steamers and Cabotage for private parties.

British India S. N. Company, Limited.

MAIL AND PASSENGER STEAMERS. Regular service to India, Europe and America. For Liverpool sailing as MALTA (Steamer, JAMES MOSS & Co., 21, James St., Liverpool, England).

ANCHOR LINE, LIMITED.

REGULAR SERVICE FROM ALEXANDRIA (Passenger and Freight) TO NAPLES-MARSEILLES. Regular service from Alexandria every Saturday at 4 p.m. for Naples, Genoa, Genoa, Genoa.

Deutsche Levante-Linie.

Mail and Passenger Steamers. Regular three-weekly service from Alexandria to Smyrna, Constantinople, and other ports in the Levant.

Deutsche Ost-Afrika Linie.

REGULAR EAST AFRICAN LINE. Regular mail service from Alexandria to Aden, Bombay, Calcutta, and other ports in the East.

Messageries Maritimes.

For Alexandria sailing from Alexandria in August, 1905. For Marseilles direct. For London direct.

CUNARD LINE.

Alexandria to New York and Boston via the Overland and Liverpool. Regular service from Alexandria to New York and Boston.

ELLERMAN LINES, LIMITED.

MALTA, LONDON, GENEVA AND CALCUTTA. Regular service from Alexandria to Malta, London, Geneva, and Calcutta.

The Ellerman Lines Limited.

Regular sailings from Liverpool, Glasgow, Antwerp and London to Alexandria. Frequent sailings from Alexandria to Liverpool and London.

Navigation Générale Italienne.

Regular sailings from Alexandria to Genoa, Naples, and other ports in Italy. Regular service from Alexandria to Genoa, Naples, and other ports in Italy.

BANK OF ATHENS, LIMITED.

Capital 1,000,000 Dracmas. Reserve Fund 250,000 Dracmas. Bank of Athens, Limited, Athens, Greece.

IMPERIAL OTTOMAN BANK.

Capital 1,000,000 Lira. Reserve Fund 250,000 Lira. Imperial Ottoman Bank, Constantinople, Turkey.

Sudan Government Railways.

Cairo-Khartoum Summer Mail Service. Regular service between Cairo and Khartoum during the summer months.

ALEXANDRIA BONDED WAREHOUSE COMPANY, LTD.

Bonded Warehouses in Alexandria, Cairo, Port Said, and Suez. Special Department for Storage and Forwarding.

Anglo-American Nile Steamer & Hotel Co.

Weekly departure during Winter Season by the Luxurious First Class Steamers VICTORIA, PURITAN & MAINTON. Regular weekly departures to the SECOND CAHIRA AND THE S.S. INDIA.

NORDEUTSCHER LLOYD.

Regular Service from ALEXANDRIA (Passenger and Freight) TO NAPLES-MARSEILLES. Regular service from Alexandria every Saturday at 4 p.m. for Naples, Genoa, Genoa.

Austrian Lloyd's Steam Navigation.

Weekly Express Mail Service. Steamers leave Alexandria every Saturday at 4 p.m. for Trieste, Venice, and other ports in the Adriatic.

CUNARD LINE.

Alexandria to New York and Boston via the Overland and Liverpool. Regular service from Alexandria to New York and Boston.

ELLERMAN LINES, LIMITED.

MALTA, LONDON, GENEVA AND CALCUTTA. Regular service from Alexandria to Malta, London, Geneva, and Calcutta.

The Ellerman Lines Limited.

Regular sailings from Liverpool, Glasgow, Antwerp and London to Alexandria. Frequent sailings from Alexandria to Liverpool and London.

Navigation Générale Italienne.

Regular sailings from Alexandria to Genoa, Naples, and other ports in Italy. Regular service from Alexandria to Genoa, Naples, and other ports in Italy.

BANK OF ATHENS, LIMITED.

Capital 1,000,000 Dracmas. Reserve Fund 250,000 Dracmas. Bank of Athens, Limited, Athens, Greece.

IMPERIAL OTTOMAN BANK.

Capital 1,000,000 Lira. Reserve Fund 250,000 Lira. Imperial Ottoman Bank, Constantinople, Turkey.

Sudan Government Railways.

Cairo-Khartoum Summer Mail Service. Regular service between Cairo and Khartoum during the summer months.

ALEXANDRIA BONDED WAREHOUSE COMPANY, LTD.

Bonded Warehouses in Alexandria, Cairo, Port Said, and Suez. Special Department for Storage and Forwarding.

Sudan-Development & Exploration Company, Limited.

Transport Department. Special Department for Storage and Forwarding. Sudan-Development & Exploration Company, Limited, Khartoum, Sudan.

Sun Insurance Office.

Founded 1770. Total sum insured in 1904 £4,877,000,000. Agents: LEON HILF, Cairo, and EBBEND & Co., Alexandria.

Royal Insurance Coy

FIRE AND LIFE.

Largest Fire Office in the World.

HASELDEN & CO. Agents, Alexandria.
R. VITBERO & CO. Agents, Cairo.

PHENIX ASSURANCE COMPANY, LIMITED.

(ESTABLISHED 1727.)

HASELDEN & CO. Agents, Alexandria.

PRED OTT & CO. Sub-Agents, Cairo.

81 9 06

THE BRITISH
AERATED & MINERAL
WATER
MANUFACTORY.

N. SPATHIS

CAIRO
Established
ALEXANDRIA
Rue Averoff

Soda Water, Lemonade, Ginger Ale, Ginger Beer, Tonic Water, Pomegranate, Orangeade, Finsapple, Champagne, Older, etc., etc.

Water guaranteed by CHAMBERLAIN'S FILTER (PATENT'S STRAIN).

INVENTOR OF WHISKY & SODA and BRANDY & SODA, bottled ready for use.

Sole Agent in Egypt and Sudan FOR

- | | | |
|------------------------------|-----------|---|
| J. CALVERT & Co | Bordeaux | Wine & Cognac. |
| LOUIS ROEDERER | Rheims | Champagnes. |
| ACQUET ENGEL | Wiesbaden | Rhine and Moselle Wines. |
| MACKIE & Co. | Glasgow | Lagavulin, White Horse
Glenlivet and other Whiskies. |
| DUNVILLE & Co., Ltd. | Belfast | Old Irish Whiskies. |
| Wm. LANAHAN & SON | Baltimore | Monongahela XXXX Whisky. |
| THE COOK & BERNHEIMER Co. | New York | Old Valley Whiskey
and Gold Lion Cocktails. |
| STONE & SON | London | Guinness' Stout & Bass' Pale Ale. |
| FREUND BALLORA & Co. | Toronto | Vermouth. |
| PIERRE BISSET | Cannes | Vermouth & Aperitifs. |
| TERBARDONA TEA COMPANY, Ltd. | | Tonics. |

Depot for Prince Motorbicycles' Richardson's, the best mineral table water in the world.

Great assortment of Wines, Spirits, Liqueurs, of the finest Brands etc.



The TOSH Whisky
Established 1726.

MACKINTOSH & C.
IN VERNESS.

AGENTS:
M. ELEFTHERION & C.
CAIRO & ALEXANDRIA.

Retailers:
E. J. FLEURENT,
Square Helim Pascha, CAIRO.

"AU DE ROUGE."
GENERAL DRAPERY ESTABLISHMENT.
(Central Tramway Station),
CAIRO.

P. PLUNKETT,
PROPRIETOR.

DIRECT IMPORTER OF BRITISH AND IRISH
TEXTILE MANUFACTURES.

LADIES' SUMMER STOCKINGS.

IN SPUN SILK at P.T. 30 per pair
LISLE THREAD, in plain and lace
open-work, in black, white, tan and
natural shades, to suit boots worn in
Egypt, from P.T. 5 per pair.

Every pair is marked "Au De Rouge"
which is a guarantee that the Color is
absolutely fast and stainless.

34916-15-11-905

The Old Established and Favorite
"PELICAN" BRAND.
ESTABLISHED 1856.

GUINNESS'S Foreign Extra
STOUT.

BASS'S First Quality
ALE.

LIGHT SPARKLING
PALE ALE.

MACHEN & Co., Norfolk St., Liverpool.

EMBOSSING PRESS
FOR STAMPING OWN
PAPER WITH ADDRESS
CREST & C.

ENGRAVING OFFICE
J. MARGOSCHES
CAIRO, BULAC ROAD

Sole Agents to Egypt & Sudan
G. G. DROSSOS & CO.
LATE PRAZZICA & DROSSOS.
ALEXANDRIA, CAIRO PORT SAID AND
KHARTOUM 80 110 04

THE
ANGLO-EGYPTIAN BANK,
LIMITED.
LONDON, PARIS, ALEXANDRIA, CAIRO,
MALTA, GIBRALTAR, TANTAH
AND PORT SAID

Subscribed Capital £1,500,000
Paid up " " £500,000
Reserve Fund " " £500,000

The Anglo-Egyptian Bank, Limited
undertakes every description of banking business
on the most advantageous conditions.
Current accounts opened with commercial, private
and private individuals in conformity with the
usages of Bankers.

Fixed deposits for one year receive a rate of 4
per cent. per annum. Deposits at interest for shorter
periods also are received at rates to be agreed upon.
Letters of Credit for the use of travellers are
issued payable in all parts of the World.
Approved bills discounted.
Bills, documentary invoices, etc. collected.
Orders and telegraphic transfers issued payable
able all over the World.
Foreign exchange bought and sold.
Advances made upon approved securities and
upon stocks, cotton-seed, sugar and other mer-
chandise.

The purchase and sale of stocks and shares on
the London Stock Exchange and on the
local and Continental Exchanges undertaken.
Customers can deposit their securities, bonds,
etc. for safe custody in the Bank's fireproof
strong-rooms, and the Bank will be bound to
re-deliver the securities and draw bonds as
deposited as they fall due.
Inventories of the Bank.
Annulment, protest, etc. of bills, etc. as well as
all further particulars and information can be
obtained on application.
The officers and clerks of the Bank
are pledged to secrecy as to the trans-
actions of customers. 1905

Our Winter Season's Stocks

COMPRISING AN

Exquisite and Extensive Selection of Solid Silver & Plated Articles
CUTLERY, LEATHER & ATHLETIC GOODS & GAMES.

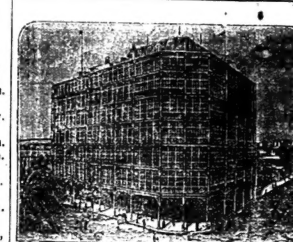
TEA AND LUNCHEON BASKETS.

CHOICE HAVANA AND INDIAN CIGARS.
VINTAGE WINES.

PROVISIONS, CONFECTIONERY AND TABLE DELICACIES,
Are now being displayed for Sale at exceedingly
moderate prices.

The Egyptian Supply Stores, (BRANCH WALKER & CO., CAIRO).

WALKER & MEIMARACHI, Limited.



EASTERN EXCHANGE HOTEL

PORT SAID.
First Class Hotel.
Modern in all respects.
Fire-proof, Drained to the Sea,
Lifts, Electric Light, English and
French Billiards, Fresh and Salt
Water Baths.
The Coldest Summer Residence in Egypt.
Special terms to Cairo Residents and
their families (season of enjoying the sea
air and sun bathing during the summer
months).
DINING ROOM IN HOTEL. UNIFORM MEAT
ALL TRAINS AND STEAMERS.
1904-2005-1

HOTEL-CASINO SAN STEFANO.

IS NOW OPEN

36048 30 9 1

THE ARTESIAN BORING AND PROSPECTING COMPANY.

(SOCIÉTÉ ANONYME)

CAIRO, 28, SHARIA EL-MANAKH,
(OPPOSITE IMPERIAL OTTOMAN BANK).

- Installation of complete Water supplies for drinking, agricultural, and industrial purposes by means of artesian wells.
- Deep borings for prospecting purposes in all conditions of soil by means of the "Express Boring System."

CIGARES de la HAVANE

de provenance directe et
de toutes les meilleures marques
Nicolas G Sabbag
IMPORTATEUR GENERAL
FOURNISSEUR DE SA LE KHEDIVE
et de tous les grands Clubs et Hôtels d'Egypte.
8-Rue de la Gare du Cairo-2
ALEXANDRIE
Adresse Télégraphique: SABBAG, ALEXANDRIE
Téléphone No. 859.
340001-10-9 5

ASK FOR

BECK & CO'S PILSENER BEER
BREWED IN BREMEN.
Obtainable from every Respectable Firm
in Cairo, Alexandria & Port Said.
Wholesale agents:
C. FLEURENT, F. MEILLER, Sole Agent,
Cairo.

DAILY WEATHER REPORT

OBSERVATIONS BY SURVEY DEPARTMENT.

ALEXANDRIA

Direction of Wind	Force	Temp. in Shade	Temp. on Sun	Temp. at 5 a.m.	Temp. at 11 a.m.	Temp. at 5 p.m.	Temp. at 11 p.m.	Humidity	State of Sky
SE	3	28.5	32.0	24.0	28.0	26.0	24.0	75	Partly Cloudy

REMARKS:
There is no change to report in the weather conditions. The barometer continues to show a rising tendency.

OTHER STATIONS:
For the 24 hours ending 8 a.m. Yesterday

Station	Max. Temp.	Min. Temp.	Wind	State of Sky
Port Said	33	21	Variable	43 29
Suez	36	24	Variable	63 39
Matruh	37	25	Variable	66 31
Helwan	35	23	Variable	56 37
Ain Helwan	33	21	Variable	57 31
Ain Helwan	31	20	Variable	51 34
Wady Halfa	40	31	Variable	51 34

FOREIGN STATIONS:

Station	Barom.	Wind	Temp.	State of Sky
Cairo	761.6	Light	28	Very slight
Alex	761.0	Light	27	Slight
Matruh	761.0	Light	28	High
Helwan	761.0	Light	28	High
Ain Helwan	761.0	Light	28	High
Wady Halfa	761.0	Light	28	High

PHASES OF THE MOON.

Phase	Time	Time	Time
1st New Moon	8 a.m.	8.11	8.4
1st Full Moon	8.10 a.m.	8.17	8.41
1st Last Moon	8.20 a.m.	8.21	8.42
2nd New Moon	8.20 a.m.	8.26	8.43
2nd Full Moon	8.30 p.m.	8.33	8.43

Sunlight

Common Soaps reduce the
Washing,
SUNLIGHT SOAP
preserves it.
It is Rapid, Pure, Sweet.
It stands in universal favour,
for it is a perfect Soap, with-
out any obnoxious or harmful
features whatever.

Soap

that there is nothing in it which any man of sufficient practical knowledge and experience cannot master, and, if necessary, reform when accepted lines have been agreed upon. When, however, we come to "Traffic's" arrangements of departments, and the position he would accord to the traffic manager, we are compelled to part company. If we return to his principle of trading as an astronomer, we do not find that, in practice, the head of the sales department has absolute control over buying and building operations. The opinion of the sales manager should be valuable, and taken accordingly, but the buyer and architect look to someone higher than him as their master. It is true that the success of a railway may depend more upon the traffic manager than upon any other official, and in matters of complication or competition the railway's earnings, and the welfare of the country, may greatly depend upon his wisdom and experience. In the matter of expenditure of every kind, his representations of the requirements of his department must carry such weight (involving as they do the security of life and property), that they cannot be lightly set aside. Upon him depends to a great extent whether money is wisely spent, withheld, or wasted, although it is invariably held that he is not concerned in its expenditure, except in so far as it may apply to his own establishment. It is true that as a rule would not fit him to deal with it, any more than the training of the responsible heads of other departments would fit them to carry out their work as contractors under his guidance. This brings us to the second part of "Traffic's" reply. We feel that it suddenly descends to a kind of criticism of little value. To have their heads of the general manager added "and of all its works," might be conveying the strained meaning attached to it. There is necessarily a chain of responsibility, not only on a railway, but in every department of it, and the Commission's conception treated as absent in the case of the general manager would be interpreted as "Traffic's" department is interlocked or not, whether appearance, as hurriedly seen, were for or against it, whether a mistake has been made in the name or in anything else; whether signaller may or may not have their heads to passing trains; or whether existing and local circumstances justify certain of the Commission's remarks, as matters too technical for us to touch upon. We took the Report as accepted generally by the authorities, including the head of the railway, and had every right to expect that Mr. Bury's wide experience and high position at home would have been a reliable adviser to the Commission in his part of the work. If we hold to this opinion and are under a mistake, we are at any rate in the good company, not only of the proprietors of the Great Northern Railway but of numbers who seek and accept Mr. Bury's services.

THE EGYPTIAN GAZETTE.

SUBSCRIPTIONS—Alexandria, Cairo, and the Interior of Egypt (including delivery in Alexandria or postage to subscriber's address) P.T. 2314 per annum, P.T. 116 for six months, P.T. 80 for three months. To other countries in the Postal Union P.T. 273 (£2.16s.) per annum. Six months P.T. 156 (£1.8s.), three months P.T. 92 (£0.19s.) N.B.—Subscriptions commence from the 1st or 16th of any month.

ADVERTISEMENTS.—P.T. 4 per line. Minimum charge P.T. 20. Births, Marriages, or Deaths, not exceeding three lines, P.T. 30. Every additional line P.T. 10. Notices in news column P.T. 30 per line. Contracts entered into for standing advertisements.

SUBSCRIPTIONS AND ADVERTISEMENTS are due in advance. P.O. Orders and Cheques to be made payable to the Editor and Manager, Rowland Shelling, Alexandria. London Offices: 36, New Broad-street, E.C. THE EGYPTIAN GAZETTE can be obtained in London at our office, 36, New Broad Street, E.C., and also at Messrs. MAY & WILLIAMS, 160, Piccadilly, W.

THE "EGYPTIAN GAZETTE" IS PRINTED ON PAPER MANUFACTURED AND SUPPLIED BY THE LONDON PAPER MILLS CO. (LIMITED) (GALLES OFFICE: 21, CANON STREET, E.C.4.)

Calendar of Coming Events

- ALEXANDRIA.
- August. Thurs. 10 San Stefano Casino. Concert. 5 p.m. Windsor Hotel. Orchestra. 6 to 11.30 p.m. every day. Max. Prince's Restaurant des Bains. Roumanian orchestra, every afternoon. Sundays, morning. Alhambra. Italian company in *Il Sultano*. 9.15 p.m.
 - Sat. 12 Crown Casino. Varieties. 9.30 p.m. B. R. Club. Practicos on Mustapha Kanga. 3 p.m. A. C. C. ground. A. C. C. XI. v. next XVI. 3.10 p.m. Alex. Swimming Club. Members to select Customs Gate 9.3. 4.30 p.m. San Stefano Casino. Dances. 9.30 p.m.
 - Sun. 13 San Stefano Casino. Concert 10.30 a.m. and 6 p.m.
- CAIRO.
- August. Thurs. 10 Theatre des Ambassadeurs. 9.30 p.m. Theatre des Nouveautés. 9.30 p.m. Bobekih Theatre. Italian Comedy Company. 9.15 p.m.
 - Fri. 11 Zoological Gardens. Performance by Ghish Boys' Band in afternoon. Bobekih Gardens. Performance by British Military Band. 9 to 11 p.m.
 - Tue. 15 Bobekih Gardens. Performance by British Military Band. 9 to 11 p.m.

THE EGYPTIAN GAZETTE.

THE EGYPTIAN GAZETTE.

THE EGYPTIAN GAZETTE.

THE EGYPTIAN GAZETTE.

THE EGYPTIAN GAZETTE.

THE EGYPTIAN GAZETTE.

THE EGYPTIAN GAZETTE.

Le Ver du Coton d'Egypte

Nota de M. Dr. P. Marchal. La Société d'Agriculture Khédiviale a récemment publié une intéressante plaquette de M. G. P. Foadan sur le ver du coton d'Egypte, Prosodia littoralis (cf. "Agricultural News", le 1er juin 1906).

Les larves de ce ver du coton (Prosodia littoralis), tel qu'on les trouve dans les champs, ont une apparence de chenilles ordinaires, mais elles se transforment en une chenille spéciale, c'est-à-dire en une chenille qui se transforme dans une chenille spéciale, c'est-à-dire en une chenille qui se transforme dans une chenille spéciale.

On conseille pour combattre cet ennemi du cotonnier de récolter et de détruire les chenilles sur lesquelles on les trouve dans les champs. On peut également employer des insecticides, mais on ne doit pas en employer trop, car ils peuvent nuire à la culture.

Les fonctionnaires égyptiens se distinguent par un attachement quelconque exagéré à leurs fonctions. Tel est employé de l'Administration des Chemins de fer qui refuse d'être admis à la retraite.

Monsieur SCAMBERG ET NEMES, architecte et dessinateur en Service de la Compagnie de Canal de Suez, au Caire.

J'ai l'honneur de vous informer que le Conseil d'Administration a décidé de sa séance du 27 août que vous cessiez de faire partie du personnel de l'Administration, par suite de votre rétrogradation à l'Administration.

Le Ministre a décidé de vous accorder une pension spéciale de L.E. 11,500 millions (Livrres Égyptiennes) outre cinq cents millions de francs par an.

Le Président, Signé: JOHNSTONE.

Credit Foncier Égyptien. Les obligations émises par les porteurs d'obligations Darieh Saïnia 4 1/2 % 1890 de gouvernement égyptien qui ont été rachetées par le gouvernement égyptien.

Les souscriptions de 1 à 4 obligations reçoivent 1 obligation; de 5 à 8, 2 obligations; de 9 à 11, 3 obligations; de 12 à 14, 4 obligations; et ainsi de suite.

Contrats. Ministère des Travaux Publics. L'adjudication du 22 juillet 1906, relative à des travaux d'agrandissement à exécuter aux bureaux du Service de l'arpentage.

ARRIVÉES. 8 août. Pinaris, vap. ang. Cayo Bonito, cap. Farrell, ton. 2213, à Ténosvoo.

DEPARTS. 9 août. Constantinople; vap. hell. Marie Reine, cap. Pappas.

ARRIVÉES. 10 août. Smyrne et Héracle; 2, vap. hell. Byronotis, cap. Mavroukaki, ton. 400, à Kobyhas.

DEPARTS. 10 août. Constantinople; vap. hell. Marie Reine, cap. Pappas.

ARRIVÉES. 10 août. Constantinople; vap. hell. Marie Reine, cap. Pappas.

ARRIVÉES. 10 août. Constantinople; vap. hell. Marie Reine, cap. Pappas.

ARRIVÉES. 10 août. Constantinople; vap. hell. Marie Reine, cap. Pappas.

ARRIVÉES. 10 août. Constantinople; vap. hell. Marie Reine, cap. Pappas.

BULLETIN DE LA BOURSE

(Aujourd'hui à midi et après) Le marché, plus faible sur les gros titres, traite que les Banques et le Darieh, montre un certain plus d'activité en ce qui concerne les petites valeurs, en particulier la Khédivial Mail, les Bédistes, le Trait, etc.

Le Darieh de l'Administration Khédiviale Mail hausse de 2/8 à 2 3/8, avec beaucoup d'affaires. Par contre la Banque Nationale décline de 27 7/16 à 27 3/8, l'ancienne émission et de 27 3/16 à 27 1/16 la nouvelle.

Comme on annonce de partout l'effluence des capitales en Europe on peut s'attendre à une reprise sensible dès les premiers jours de la rentrée.

EGYPTIAN SHARE MARKET.

(FROM OUR FINANCIAL CORRESPONDENT). London, August 4. After finishing up strong last week, markets had a sharp check early in the present week, the repeated statements of the Tsar and M. Witte being taken more seriously than was expected.

The truth is, that although investment business is really good, there is little or no speculation on the part of the public, and such speculative accounts as there are open are mostly all professional. Dealers therefore who had seen their way a little last week and opened small bill accounts, but with little permanent effect, as the public declined to follow.

In the Mining section the only point of interest is the new issue of 47,000 Nile Valley shares at £1, which has naturally brought the price of the old shares back to the same level.

ARRIVÉES. 8 août. Pinaris, vap. ang. Cayo Bonito, cap. Farrell, ton. 2213, à Ténosvoo.

DEPARTS. 9 août. Constantinople; vap. hell. Marie Reine, cap. Pappas.

ARRIVÉES. 10 août. Smyrne et Héracle; 2, vap. hell. Byronotis, cap. Mavroukaki, ton. 400, à Kobyhas.

DEPARTS. 10 août. Constantinople; vap. hell. Marie Reine, cap. Pappas.

ARRIVÉES. 10 août. Constantinople; vap. hell. Marie Reine, cap. Pappas.

ARRIVÉES. 10 août. Constantinople; vap. hell. Marie Reine, cap. Pappas.

ARRIVÉES. 10 août. Constantinople; vap. hell. Marie Reine, cap. Pappas.

ARRIVÉES. 10 août. Constantinople; vap. hell. Marie Reine, cap. Pappas.

ARRIVÉES. 10 août. Constantinople; vap. hell. Marie Reine, cap. Pappas.

ARRIVÉES. 10 août. Constantinople; vap. hell. Marie Reine, cap. Pappas.

ARRIVÉES. 10 août. Constantinople; vap. hell. Marie Reine, cap. Pappas.

ARRIVÉES. 10 août. Constantinople; vap. hell. Marie Reine, cap. Pappas.

ARRIVÉES. 10 août. Constantinople; vap. hell. Marie Reine, cap. Pappas.

ARRIVÉES. 10 août. Constantinople; vap. hell. Marie Reine, cap. Pappas.

ARRIVÉES. 10 août. Constantinople; vap. hell. Marie Reine, cap. Pappas.

ARRIVÉES. 10 août. Constantinople; vap. hell. Marie Reine, cap. Pappas.

ARRIVÉES. 10 août. Constantinople; vap. hell. Marie Reine, cap. Pappas.

STOCKS AND SHARES

Closing Prices, today at 1 p.m. BANK. Imperial Ottoman Bank 13 1/2, Nat. Bank of Egypt 27, New Bank of Egypt 27 1/2.

AGRICULTURAL BANK. Agricultural Bank of Egypt 14 1/2, National Bank of Egypt 27 1/2, New Bank of Egypt 27 1/2.

LAND. Agric. Ind. Egypt 530, Behers Company 450, Delta Land Co 40, Warden Estate Coy 6, New Delta Land Co 180.

COMMERCIAL INDUSTRIAL. Alexandria Bonded Stores 44, Anglo-Egyptian Spinning 35, Banque Khédiviale 75.

NAVIGATION & WATER WORKS. Anglo-American Nile Co 98, Khédivial Mail S.S. Co 23/9, Alex. Water Company 1150, Tanah Water Co 1150.

RAILWAYS. Delta Light 181, Delta Light Def. 97, Pylon 181, Kanih-Assouan 49, Alexandria Trams 342, Hamish Railway 18.

EGYPTIAN MINES. Giza 18, Kat-el-Zayat 102, Nour 100, Soc. Pêche et Dépôts 102, Société Fr. Presses Léves 102.

EGYPTIAN MINES (continued). Anglo-American Nile Co 98, Khédivial Mail S.S. Co 23/9, Alex. Water Company 1150, Tanah Water Co 1150.

EGYPTIAN MINES (continued). Giza 18, Kat-el-Zayat 102, Nour 100, Soc. Pêche et Dépôts 102, Société Fr. Presses Léves 102.

EGYPTIAN MINES (continued). Giza 18, Kat-el-Zayat 102, Nour 100, Soc. Pêche et Dépôts 102, Société Fr. Presses Léves 102.

EGYPTIAN MINES (continued). Giza 18, Kat-el-Zayat 102, Nour 100, Soc. Pêche et Dépôts 102, Société Fr. Presses Léves 102.

EGYPTIAN MINES (continued). Giza 18, Kat-el-Zayat 102, Nour 100, Soc. Pêche et Dépôts 102, Société Fr. Presses Léves 102.

EGYPTIAN MINES (continued). Giza 18, Kat-el-Zayat 102, Nour 100, Soc. Pêche et Dépôts 102, Société Fr. Presses Léves 102.

EGYPTIAN MINES (continued). Giza 18, Kat-el-Zayat 102, Nour 100, Soc. Pêche et Dépôts 102, Société Fr. Presses Léves 102.

EGYPTIAN MINES (continued). Giza 18, Kat-el-Zayat 102, Nour 100, Soc. Pêche et Dépôts 102, Société Fr. Presses Léves 102.

EGYPTIAN MINES (continued). Giza 18, Kat-el-Zayat 102, Nour 100, Soc. Pêche et Dépôts 102, Société Fr. Presses Léves 102.

MARCHE DE MINET-EL-BASSAL

10 août 1906. (11h.55 a.m.) Cotons - Clôture du marché du 9 août: Calme.

Graines de coton - Calme. Graines de coton - Calme. Graines de coton - Calme.

Graines de coton - Calme. Graines de coton - Calme. Graines de coton - Calme.

Graines de coton - Calme. Graines de coton - Calme. Graines de coton - Calme.

Graines de coton - Calme. Graines de coton - Calme. Graines de coton - Calme.

Graines de coton - Calme. Graines de coton - Calme. Graines de coton - Calme.

Graines de coton - Calme. Graines de coton - Calme. Graines de coton - Calme.

Graines de coton - Calme. Graines de coton - Calme. Graines de coton - Calme.

Graines de coton - Calme. Graines de coton - Calme. Graines de coton - Calme.

Graines de coton - Calme. Graines de coton - Calme. Graines de coton - Calme.

Graines de coton - Calme. Graines de coton - Calme. Graines de coton - Calme.

Graines de coton - Calme. Graines de coton - Calme. Graines de coton - Calme.

Graines de coton - Calme. Graines de coton - Calme. Graines de coton - Calme.

Graines de coton - Calme. Graines de coton - Calme. Graines de coton - Calme.

Graines de coton - Calme. Graines de coton - Calme. Graines de coton - Calme.

Graines de coton - Calme. Graines de coton - Calme. Graines de coton - Calme.

EGYPTIAN COTON

Exportation des mois de juillet 1906. Angleterre... 4,921, France... 4,492, Autriche... 4,606, Italie... 7,715, Allemagne... 4,447, Espagne... 1,659, Belgique... 2,660, Hollande... 475, Japon... 50, Suède... 800, Turquie, Grèce et Roumanie... 938.

Graines de coton - Calme. Graines de coton - Calme. Graines de coton - Calme.

Graines de coton - Calme. Graines de coton - Calme. Graines de coton - Calme.

Graines de coton - Calme. Graines de coton - Calme. Graines de coton - Calme.

Graines de coton - Calme. Graines de coton - Calme. Graines de coton - Calme.

Graines de coton - Calme. Graines de coton - Calme. Graines de coton - Calme.

Graines de coton - Calme. Graines de coton - Calme. Graines de coton - Calme.

Graines de coton - Calme. Graines de coton - Calme. Graines de coton - Calme.

Graines de coton - Calme. Graines de coton - Calme. Graines de coton - Calme.

Graines de coton - Calme. Graines de coton - Calme. Graines de coton - Calme.

Graines de coton - Calme. Graines de coton - Calme. Graines de coton - Calme.

Graines de coton - Calme. Graines de coton - Calme. Graines de coton - Calme.

Graines de coton - Calme. Graines de coton - Calme. Graines de coton - Calme.

Graines de coton - Calme. Graines de coton - Calme. Graines de coton - Calme.

Graines de coton - Calme. Graines de coton - Calme. Graines de coton - Calme.

Graines de coton - Calme. Graines de coton - Calme. Graines de coton - Calme.

EGYPTIAN MINING MARKET.

Graines de coton - Calme. Graines de coton - Calme. Graines de coton - Calme.

Graines de coton - Calme. Graines de coton - Calme. Graines de coton - Calme.

Graines de coton - Calme. Graines de coton - Calme. Graines de coton - Calme.

Graines de coton - Calme. Graines de coton - Calme. Graines de coton - Calme.

Graines de coton - Calme. Graines de coton - Calme. Graines de coton - Calme.

Graines de coton - Calme. Graines de coton - Calme. Graines de coton - Calme.

Graines de coton - Calme. Graines de coton - Calme. Graines de coton - Calme.

Graines de coton - Calme. Graines de coton - Calme. Graines de coton - Calme.

Graines de coton - Calme. Graines de coton - Calme. Graines de coton - Calme.

Graines de coton - Calme. Graines de coton - Calme. Graines de coton - Calme.

Graines de coton - Calme. Graines de coton - Calme. Graines de coton - Calme.

Graines de coton - Calme. Graines de coton - Calme. Graines de coton - Calme.

Graines de coton - Calme. Graines de coton - Calme. Graines de coton - Calme.

Graines de coton - Calme. Graines de coton - Calme. Graines de coton - Calme.

Graines de coton - Calme. Graines de coton - Calme. Graines de coton - Calme.

Graines de coton - Calme. Graines de coton - Calme. Graines de coton - Calme.

MARKETING AT THE DOOR.

It is sure it was a great enterprise for us to take a cottage in a French fishing village...

That was true, of course. We had to begin by letting the vendors help themselves to their payments...

After having a very abundant and fresh catch of fish, very often of three fishes before breakfast...

After talking with you may buy the seeds and carry these home, writing in whatever happens to be hand...

Mademoiselle who sells us our fruit and vegetables comes out of her little garden...

There is a delightful little old woman who comes from Cape Girardeau with a donkey-cart full of butter and eggs...

One thing is a misunderstanding. The boy of the knife-grinder has been hanging round the yard for the operator...

We cannot say "No" to the little mahogany-faced old woman...

KATHERINE TYSON.

THE JUNGRAF RAILWAY.

A further step has been made towards the completion of the railway which is to transport tourists to the summit of the Jungfrau...

There was great excitement at Interlaken when it was known that the line was open...

By next summer it is hoped to have a road open up to the summit of the Eiger and the Mönch...

A PROTECTION AGAINST MOSQUITOES.

Mr. Walter J. Hammond writes from the City of London Club, Old Broad Street, E.C.4...

WINDSOR HOTEL Restaurant.

Table d'Hôte Luncheon & Dinner Served on the Terrace ORCHESTRA PLAYS 6 TO 11.30 P.M.

MAT HAFFGAN'S ADVOCATE.

When Mr. George Bernard Shaw wrote "John Bull's Other Island," he invented Mr. Matthew Haffgan as a type of the land-hungry Irishman...

Count Tolstoy, who devotes some long interesting columns of the "Times" to an exposition of his "utopian" views...

Count Tolstoy is both violent and visionary. His dreams are lauded by the figure of Henry George...

This singular, curious, interesting and amazing, shows clearly enough why the idealist's noblest is permitted a latitude which the Russian Government does not often allow to thinkers...

CALENDAR OF THE WEEK.

- Sun. 6 Avoid female society. Opening of reservoirs (Upper Egypt). Mon. 7 Evening riots of Sifra. Tues. 8 Avoid eating onions and garlic. Wed. 9 Thru. 10 Drink cold water before breakfast. Fri. 11 Great abundance of water-moles. Sat. 12 Ripening of pistacchio (Syria).

The Standard Life Assurance Company.

ESTABLISHED 1865. ACCUMULATED FUNDS £11,300,000 BONUS YEARLY 1905.

Head Office for Egypt: Maria, Kasr-el-Nili, Cairo. B. NATHAN & Co. A. V. THOMPSON.

COMPLET DES COURSES.

"Patria sport" Complet des courses! Résumé complet des courses! Patria sport complet! Strating with perspiration, wide-eyed, red-faced, hoarse-voiced, and débâillé!

Cheap Prepaid Advertisements.

Under this heading advertisements are inserted at the following rates: 15 words... 5 P.T. 5 P.T. 15 30 words... 8 P.T. 10 P.T. 24 Every 10 words... 2 " 4 " 6

A GARD'S INTERNATIONAL INDUSTRIAL AND TRADE MARK REGISTER.

A useful business firm of Great Britain and the Continent, and Egypt. One special offering: Post Free.

ADVERTISING AGENTS.

The best public advertising sites in Alexandria, Egypt, and Cairo. G. V. G. & Co., Advt. Agents, 21, Rue de Saïd.

AMERICAN MANUFACTURERS' AGENTS.

Wishes to advise having received a fresh consignment of Roll-top Desks, Morris Chairs, Sewing Machines, Refrigerators, etc.

ENGLISH CLERK (11) with shipping.

Apply, No. 26, 203, "Gazette" office, 343/304-5.

LAND FOR SALE.

Three rods at Hala (Giza) after sports in these roads requires direct without any medium, in Cairo to Mr. A. Douma, or in Alexandria to visit the land and information to Mr. Max Ode, Immovable Matters, near the Crown Brewery in Ibrahimiya, every day except Sundays and Holidays from 8 to 4 p.m.

MAGASIN VICTORIA.

Has opened premises, Rue Saïd, and intend holding a sale of GENERAL SALE of general stock until September 8. Good bargains in all departments. 25314-1-1.

ORGANIST (temporary) required for All Saints Church.

Apply to Mr. Max Ode, Immovable Matters, near the Crown Brewery in Ibrahimiya, every day except Sundays and Holidays from 8 to 4 p.m.

YACHTING PROSPECTS AT COWES.

Not for many years has the "Yachtman" had the outlook for Cowes been brighter. One factor alone remains - an all-important one - and should the weather not be propitious our hopes may be blasted.

ESTABLISHED FOR QUALITY AND DURABILITY.

HALL'S "BOAR'S HEAD" BRAND.

Guinness's T. B. HALL & CO. Sole Importers for Egypt and the Sudan. G. WEAVER & Co. ALEXANDRIA, CAIRO and TAHRIF.

DAVIES BRYAN & Co.

Continental Hotel Buildings CAIRO. St. David's Buildings, ALEXANDRIA, and 35-37 Noble Street LONDON E.C.

English Tailors, Drapers and Outfitters.

TRAVELLING REQUISITES. COMPRESSED GAMB TRUNKS. SOLID LEATHER OVERLAND TRUNKS. GLADSTONE & KIT BAGS. SUIT CASES, RUGS, etc.

ATHLETIC GOODS: A VARIED STOCK, INCLUDING Slazenger's Doherty "E.G.M." Demons AND Ayre's Central "Strung" Rackets.

TENNIS BALLS. FRESH SUPPLY WEEKLY. BOOTS & SHOES.

All the newest shapes in the best English makes - BUCKSKIN TENNIS BOOT AT £1 A SPECIALITY. Owing to the increased business in this Department a new Show-room has been fitted up where better attention can be given to Customers.

CLOTHS: The largest Stock in Egypt of Cloths of the best British Manufacture.

TROPICAL TWEEDS, FLANNELS, DRILLS, &c., &c. All garments cut by experienced English cutters. Fit and style guaranteed.

GENTS' OUTFITTING: The newest Shades in Crepe de Chine Ties. Cellular, Oxford, Zephyr Shirts and Pyjamas in great variety.

Special Attention paid to Shirts Made to Measure, HOSIERY and UNDERCLOTHING IN THE BEST MAKES. PANAMA, STRAW, & FELT HATS GORE & PITH HELMETS. CAPS.

HOUSEHOLD LINEN AT SPECIALLY CHEAP PRICES. TABLE CLOTHS, NAPKINS, CHERMETS, and FELLOW CLOTHS. FLANNELLETTES, VESTS, and OXFORD FLANNELS. SOAP, PERFUMERY, RUBBER SPONGES, BRUSHES, STUDES, MIRRORS (HAND & WALL) FOUNTAIN PENS, &c., &c. Davies Bryan & Co., Cairo & Alexandria.

BANQUE IMPERIALE OTTOMANE

CAISSE D'EPARGNE

SITUATION AU 30 JUIN 1905.

Table with columns for account types (e.g., Dépôts au Caire, à Alexandrie, à Port-Saïd) and amounts in L.E. and P.T.

GARANTIES

Table listing various financial guarantees and their corresponding values in L.E.

EXPORT MANIFESTS.

Table of export manifests for various goods like cotton, sugar, and other commodities, listing quantities and destinations.

CEREAL MARKET

Table showing cereal market prices for various types of wheat, barley, and other grains.

REUTER'S TELEGRAMS

Table of Reuter's telegrams and closing reports for various markets and commodities.

CLOSING REPORTS

Table of closing reports for various financial instruments and markets.

Allen, Alderson & Co. LIMITED.

SOLE AND EXCLUSIVE AGENTS FOR MESSRS. RUSTON, PROCTOR & CO., LIMITED, LINCOLN. Fixed and Portable Steam and Oil Engines, Corn Mills.

Advertisement for Dr. J. Collis Browne's Chlorodyne, describing it as a remedy for cholera, dysentery, and other ailments.

Advertisement for Milner's Safes, G. Marcus & Co., highlighting their strength and security features.

Thos. Cook & Son (Egypt), Ltd.

MECHANICAL AND ELECTRICAL ENGINEERS, ALSO SHIPBUILDERS, &c., &c. All classes of engineering work and supply of stores undertaken.

Advertisement for ORENSTEIN & KOPPEL, LTD., featuring an image of a steam engine and listing their various engineering services.

Advertisement for STEINEMANN, MABARDI & CO, The Egyptian Engineering Stores, listing their extensive inventory of machinery.

RAMLEH RAILWAY COMPANY.

Table of Ramleh Railway Company schedules and ticket prices for various routes.

Municipalité d'Alexandrie

AVIS. Le mercredi 16 août courant 20 h. m. à 10 h. p.m. la Municipalité procédera à la vente aux enchères publiques...

ALEXANDRIA TRAMWAY COMPANY

Table of Alexandria Tramway Company schedules and ticket prices.

CREDIT LYONNAIS

Agence d'Egypte: Alexandrie, Le Caire, Port-Saïd. Le CREDIT LYONNAIS fait toutes opérations de banque...

PHIMES DES CONTRATS

Table of contract terms and conditions for various goods and services.

Egyptian Delta Light Railways Co., Limited.

Table of Egyptian Delta Light Railways Co. routes, stations, and fares.

CLEAN WALLS AND WHITE CEILING

ARE ALWAYS POSSIBLE AT A MINIMUM COST PROVIDED YOU USE

FRESKEL (REGD.)

Advertisement for FRESKEL water paint, highlighting its sanitary and economical properties.